

NEWSLETTER

Number 20 - Winter 2015/16

CHAIRMAN'S REPORT



2016 will be a truly remarkable Royal year as the nation celebrates the 90th birthday of Her Majesty Queen Elizabeth II. It will be no surprise that the Royal Parks form the backdrop for several of the celebration events, including the Queen's Birthday Parade, known as Trooping the Colour (pictured below), which will be held on 11 June, to be followed by a giant street party in the Mall on 12 June.

It is also a significant year for the Royal Parks Guild as we celebrate the 10th anniversary since its launch in July 2006 at the Hampton Court Flower Show.

The Guild has made great strides since those early days, and thank you to all of you who have made it so. To mark this important anniversary we will be holding several special events during 2016, now in the planning stage.

Planning is at the heart of the change being considered for the Royal Parks organisation and below, the CEO Andrew Scattergood brings us up-to-date. Finally, may I wish all members a rewarding and peaceful 2016, and I look forward to your continued membership of the Guild.

Mike Fitt



THE
ROYAL
PARKS
GUILD

IN THIS NEWSLETTER

	Pg
Chairman's Report	1
Andrew Scattergood	1
Volunteering for the Guild	2
Richmond Park Open Day 2015	3
Deer Safari: Members' Masterclass	4
Deer Safari: In the City	5
History: Apsley House	6
History: John Gibson (1815-75)	7
New members / People news	8
In Our Thoughts	8

SEPARATE SHEET

Guild Awards: Apprentice Awards

Guild Awards: Wildlife Conservation Award

The Royal Parks: An Inspirational Time

By Chief Executive Officer, Andrew Scattergood

The past few months have been a really inspirational time in terms of the creation of a new organisation to manage and fund-raise for the Royal Parks.

As a result of recent meetings with staff, stakeholders, Friends and others who have worked closely with the parks over the years, we have been given a real sense of passion, not only for the parks themselves, but also for a vision for the new organisation.

There's been lots of consistency on what people have been saying is important for the new organisation to focus on, alongside some brilliant, entrepreneurial thinking about how we can do things even better in the future when we have the greater freedom and flexibility to ensure we manage the parks more effectively.

What came through strongly at our vision sessions were some key themes that are absolutely core, and which we'll need to cherish and evolve. These include that our parks remain free and accessible as

informal spaces, that they remain areas of conservation and sites of ecological importance, that they support well-being, that they are living landscapes of horticultural excellence, and that they are recognised as unique and world-class green city spaces which host



some of the world's most iconic and famous major events and ceremonies.

Since those discussions we've paused, taken stock and are now drawing together all views to come up with a vision for the organisation which has been created by those who are so passionate about the parks. And that's just one part of the

journey we're on to create a new, brighter future.

We're now awaiting final approval from the Treasury on the creation of a new organisation, which we hope to get in the next couple of weeks. Everything is looking positive for us after the Chancellor referenced a new operating model for The Royal Parks in his Autumn statement in November, but we need a more formal stamp of approval to our plans before our dream starts to become a reality.

But this doesn't mean work has stopped. We're in discussions with various organisations that have been through similar transitions. It's great to hear that a lot of the work we're already doing is in line with their suggestions, but we're also taking handy hints from them about how we can make this transition even smoother. One thing's for sure, we're definitely not going through this alone, and subject to Treasury approval we still hope to be on track to launch the new organisation on October 1, 2016. ■



THE
ROYAL
PARKS
GUILD

**Guild Chairman
Mike Fitt explains
how important
and rewarding it
is to be a
volunteer involved
in one or more
of the Guild's
popular activities**



VOLUNTEERS

One of the Guild's aims is to support the Royal Parks through volunteering, and quite a few Guild Members have taken up the challenge, generating many hours of volunteer effort since the formation of the Guild nearly 10 years ago.

The volunteering undertaken varies considerably, and includes the staging of Guild displays, exhibitions and gardens, with follow-up roles as stewards to explain the purpose of the Guild to visitors at various events. Some members give expert advice to visitors at Allotment Open Days and Harvest Festivals held in the parks. Others share their expertise by training allotment garden volunteers and apprentices in horticultural skills.

Some volunteers act as mentors and 'buddies' to the apprentices, helping them in their studies and chosen career. Alongside this, Guild volunteers have played a part in support of the Apprentice Masterclasses, held not only in various Royal Parks but at gardens such as RHS Wisley, in Surrey.

An expanding activity is that of research, with members looking at, for example, the history of Speakers' Corner and Brompton Cemetery, and the impact of WW1 on the parks. Some of this work has assisted the Royal Parks in the design of landscape features and interpretative material. In the case of WWI, members researching the Great War have uncovered a relatively unknown but fascinating part of the Royal Parks' history.

The Guild is keen to build on the success of its volunteering activities and will be organising a workshop to thank those members who already volunteer, and for those who would like to find out more about volunteering with the Guild.

Volunteering may be undertaken in many guises, including those above, as well as research in local libraries and actively working online from home. For example, we are always keen to receive members' memories, stories, anecdotes or research about the Royal Parks, both for the newsletter and Guild history collection, so put pen to paper and let us know. Details of the volunteer event will be circulated at a later date. If you would like to contact me about volunteering, before then, please do. My contact details are on the back page of this Newsletter.



Richmond Park & WW1 by Dave Ivison

Venue: Richmond Park Open Day, Holly Lodge

Date: 13 September 2015

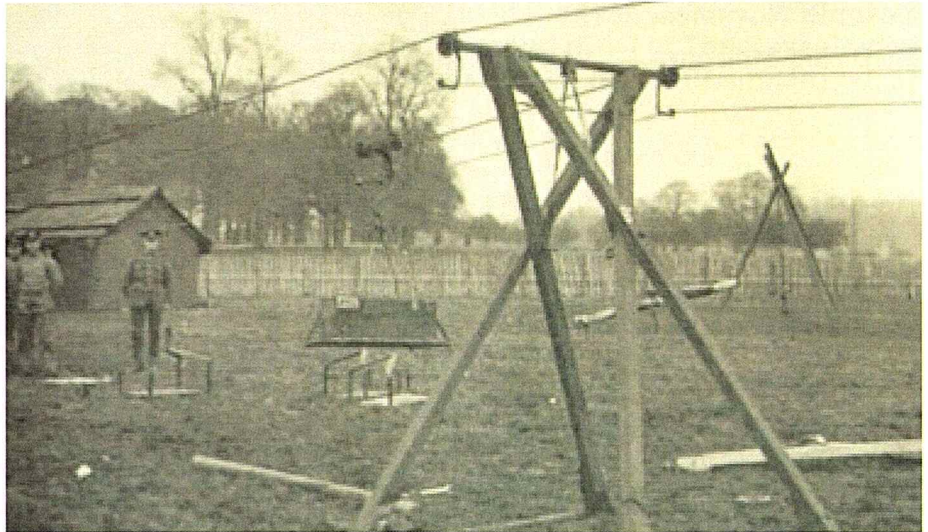
The Open Day this year was attended by some 2,400 people, and it gave the Guild a perfect opportunity to present a display of its work. We were able to show the public the extent of our activities, to say hello to members, and to recruit new ones.

This year it also included the Guild's staging of a First World War living history event. Over the next four years we will be collaborating with The Royal Parks on a series of events to mark 100 years since WW1 (mentioned in the last newsletter).

On the day we teamed up with the 10th Essex Living History Group to display a replica of a 'telpherage system' (a form of aerial ropeway). Developed in 1917 by Captain Leeming of the Royal Engineers, it was from an idea by HG Wells, author of *War of the Worlds*, to efficiently move materials from the rear supply depots to the front line. Wells mentions it in his autobiography of 1934.

During the war the Trench Warfare Department of the Ministry of Munitions established an experimental ground at Richmond Park to test new and unusual contraptions, which it was hoped would help win the war.

In our research into WW1 activities within the Royal Parks we found photographs of the system under test in Richmond Park, and so were able to recreate a realistic, full scale, 30m long portrayal of this aerial ropeway. The 10th Essex provided 'army' personnel in period dress and the relevant equipment to bring the scene to life, creating a very authentic-looking WW1 worksite.



TOP: This archive photo was our model for re-creation of the ropeway.
ABOVE LEFT: Our completed re-creation.
ABOVE: Members of the 10th Essex Living History Group, setting the scene.
LEFT: The 10th Essex, interacting with visitors to the open day.

THANK YOU

....to **Simon Richards** and **Adam Curtis** of The Royal Parks for their support, and helping to provide essential materials.

....to **Guild volunteers** for their hard work.

....to **Ray, Brian** and **Lee** of **Vinci Facilities** for their time in constructing the pylons.

....to **Robert Holmes Estate Agents** and **Ernie Colicci** who generously helped sponsor the event, and finally

....to the members of the **10th Essex Living History Group**, for so realistically transporting us back to WW1.



Tom and Murdoch, shire horses from Operation Centour, mowing the meadow on Buckhill, Kensington Gardens

MAKE HAY THE OLD FASHIONED WAY

Last autumn, Kensington Gardens' staff worked in partnership with the **Royal Parks Foundation** and **Operation Centour** (which carries out conservation work with the shire horses in Richmond Park), to trial a 'cut-and-harrow' of Buckhill meadow, using horse-drawn equipment. This sensitive meadow management results in a rougher cut and gives the grassland a more traditional appearance.

These working horses also provide other conservation benefits as they make little noise, and don't compact the soil. Working the land with horses keeps a fundamental part of our heritage alive, and demonstrates skills rarely seen in the heart of London. However, we must thank a group of dedicated volunteers, who were needed to rake up the resulting thatch!

The aim of the trial is to learn from this pilot and replicate the work in an annual management programme through 2016, including an early spring short cut, late summer mow, and an autumn and winter harrow.

Sarah Harrison, Projects Manager, Royal Parks Foundation

DEER SAFARI

Date: 27 November 2015

By Dr Sid Sullivan

THE GUILD MEMBERS' MASTERCLASS

What do we know about the challenges of maintaining the vibrancy of the deer herds in Richmond Park, whilst simultaneously playing host to many millions of visitors and vehicle traffic each year? To find the answers, the Royal Parks Guild Member's Masterclass series joined up with Simon Richards, Park Manager of Richmond Park since 1995, and John Bartram, the Senior Wildlife Officer (Deer Keeper) who has been managing the deer in Richmond Park since he joined the Royal Parks from Kew Gardens in 1986.

We were enthralled as they explained how the herds first arrived at the park, the means that they deploy to look after them to keep them healthy, and ensure that there is minimal disruption to them – and the visitors.

Simon and John started by telling us a little of the background to the deer herds, after which they provided us with startling facts. For example, deer eat rapidly; initially chewing their food only enough to swallow it. It is then stored in a stomach called the rumen. It is then regurgitated, chewed and swallowed again; it passes through a series of four stomachs where the digestion begins.

For their first few weeks of life, fawns thrive on their mother's milk, which is more than twice as nutritious as the best cow's milk. And as for the trade-mark antlers, they grow and then shed them each year, which is startling when you consider the energy that they must put into growing each set!

After a fascinating morning session, including a viewing of the Hearsam Collection archives, a much appreciated lunch was provided. Thank you to Daniel Hearsam for allowing us access to the archive, and for facilitating lunch.

In the afternoon, we toured the park to meet the deer – what a photo opportunity! Seeing the herds up close and in the company of experts who were able to answer questions and explain deer behaviour, made this part of the day especially enjoyable. The day also provided our Chairman, Mike Fitt OBE, with the opportunity to present the Royal Parks Guild's Wildlife Conservation Award to an unsuspecting and totally surprised Dr Jan Hewlett (see the separate sheet provided with this Newsletter).

■ *The next Masterclass will run on Monday 18 April at Hampton Court, where we will explore the history, science and practice of vegetable and fruit growing at the newly opened 'Kitchen Garden'. The booking details will be sent out at a later date.*



BROMPTON CEMETERY

The Royal Parks has secured nearly £4.5million Parks for People funding from the Big Lottery Fund and the Heritage Lottery Fund to protect the future of Brompton Cemetery. TRP will also invest a further £1.2m into the project with an additional £500,000 coming from The Royal Parks Foundation.

The 39 acres of green space is one of the oldest designed Grade I cemeteries in the country. It houses some unique monuments, including a picturesque chapel, said to be inspired by the piazza of St Peter's Basilica in Rome.

The cemetery will undergo a major facelift which will help recreate Benjamin Baud's 1840 vision.

For more information, visit: www.supporttheroyalparks.org

Apprentice Awards 2015

The Royal Parks Guild Apprentice Awards 2015 ceremony was held at the RHS Garden, Wisley, on 28 October. The awards this year were presented by Andrew Scattergood (CEO of The Royal Parks), Sarah Cathcart (Head of Education and Learning, RHS) and Mike Fitt (Guild Chairman).

Apprentice of the Year Award winners:



YEAR 1: Laurence Tippins
(Turfsoil, Richmond Park)



YEAR 2: Adam Watts
(Turfsoil, Bushy Park)



YEAR 2 (SPECIAL AWARD):
Adam Stoter
(OCS, Hyde Park)

■ The full citation for each apprentice can be found on the Guild's website: www.trpg.org.uk

The George Cooke Award 2015

The absence of a 3rd year group of apprentices this year means that the Guild has been able to cast its net wider to identify a worthy recipient for the George Cooke Award. It was decided, therefore, that the winner for 2015 is former Royal Parks apprentice, **Alison McAtamney** (right), for her services to the Royal Parks apprenticeship scheme. This Award is sponsored by the Worshipful Company of Gardeners and is presented at their Livery Dinner in November.



Alison currently works for OCS in Kensington Gardens, but she started her career in the Royal Parks 26 years ago as an apprentice in St James's Park. Since then she has mentored and assisted numerous apprentices, to help them gain their qualifications and go on to work in the horticultural industry.

Alison has an absolute passion for horticulture and there is nothing she enjoys more than sharing her knowledge and interest with others. She is a true 'plantswoman' and is always on a quest to learn and enjoy every aspect of gardening. Horticulture is both her career and her hobby.

Happily for everyone, Alison loves passing this knowledge on to others. She ensures her apprentices succeed, and whether it is organising plant identifications, helping with revision, talking about well-known gardens or the RHS Chelsea Flower Show, her enthusiasm is endless. Add to this her personal library of almost 300 books, which she generously houses at work and shares with everyone, then she really is a fantastic mentor and support to the apprentices. When these young people start out they are often finding their feet in their first job and she is friendly and welcoming.

Alison is unstinting with her time. Apprentice successes are her successes and, as many of them go on to inspiring and interesting careers in horticulture when they leave, Alison can feel justifiably proud that she has played a part in their success.

■ Sadly, Alison was unable to attend the Livery Dinner so her award was received on her behalf by former apprentice Leon Charalambous.

Welcome to the 2015 Apprentice intake:

Ross Gildea – Hyde Park
Michael Bright – Kensington Gardens
Verity Joiner – St. James's Park
Conor Reynolds – The Regents Park
Peter Houston – Greenwich Park
Shomari Armstrong – Greenwich Park
Jamie Gould – Richmond Park
Reece Smith – Bushy Park
■ Also, welcome to a new Royal Parks Wildlife Apprentice:
Frances Butler – The Regents Park

Royal Parks Guild Wildlife Conservation Award 2015

In partnership with The Deer Study Group and Wildlife Centre,
and support from Robert Holmes Estate Agents



The 2015 Wildlife Conservation Award was presented to **Dr Jan Hewlett** at the Deer Masterclass, Pembroke Lodge on Friday, 27 November, by Mike Fitt OBE, Guild Chairman, and Russell Mander, Trustee and Chairman of the Deer Study Group and Wildlife Centre.

In presenting the Award, Mike Fitt said: "Since her days at the Greater London Council as part of the ecology section, Jan has been out in the field identifying habitats, surveying the flora and fauna and making recommendations as to key areas in London vitally important to wildlife conservation. Through her endeavours, much good work has been done to conserve, through careful and well-argued justification, many rare and isolated wildlife habitats in London, often in the most unlikely places.

Jan has been an active member of the London Natural History Society for many years and recently played an important part in the Hedgehog Survey at Regents Park, which looked at the last surviving population of hedgehogs in Central London, including ways to ensure their survival in years to come; a passion close to her heart."

Mark Lane MVO, Chair of the Central Royal Parks Wildlife Group, said: "The time Jan has spent administering and working with the Central Royal Parks Wildlife Group has been inestimable. Her breadth of knowledge, in so many fields, brings an informed overview to the Group and she is respected by all. Always providing a clear and logical perspective, Jan is invaluable to our organisation."

Congratulations go to Jan, from all of us at the Guild.

Apprenticeship Champion of the Year 2015

Guild member **Neil Cain** (pictured), Operations Director at John O'Conner (Grounds Maintenance) Ltd, was awarded the prestigious City & Guilds Apprenticeship Champion of the Year, at the National Apprenticeship Awards, held in London recently. Now in their 12th year, the Awards celebrate the success of the UK's most exceptional Apprentices and Apprentice employers.

Neil has been involved with apprentices his whole career, from his time as a Parks apprentice, to supporting new apprentices working in The Royal Parks in the 90's and the development of their site based training

programme, to becoming the driving force behind apprenticeships at John O'Conner.

Neil said: "I am truly honoured to win this award. My City & Guilds Apprenticeship with Sunderland Parks Department has been the foundation for over 30 successful years in the industry. My progression is a testament to the potential of Apprenticeships."



Apprenticeships
National Awards 2015

#AppAwards15
winner

Neil Cain
City & Guilds Apprenticeship Champion of the Year



Nadhim Zahawi, the Prime Minister's Apprenticeship Adviser, who presented the awards: "The Prime Minister is committed to three million apprenticeship starts by 2020 and I am excited to have a role in helping to deliver this. There are many examples of excellent apprenticeships and these winners are the best of the best. I'd like to congratulate Neil on his success."

Skills Minister Nick Boles:

"Congratulations to Neil on his huge success. Apprenticeships, truly, are set to be one of the great success stories of the decade, and Neil is a very worthy ambassador."

Employment Minister Priti Patel:

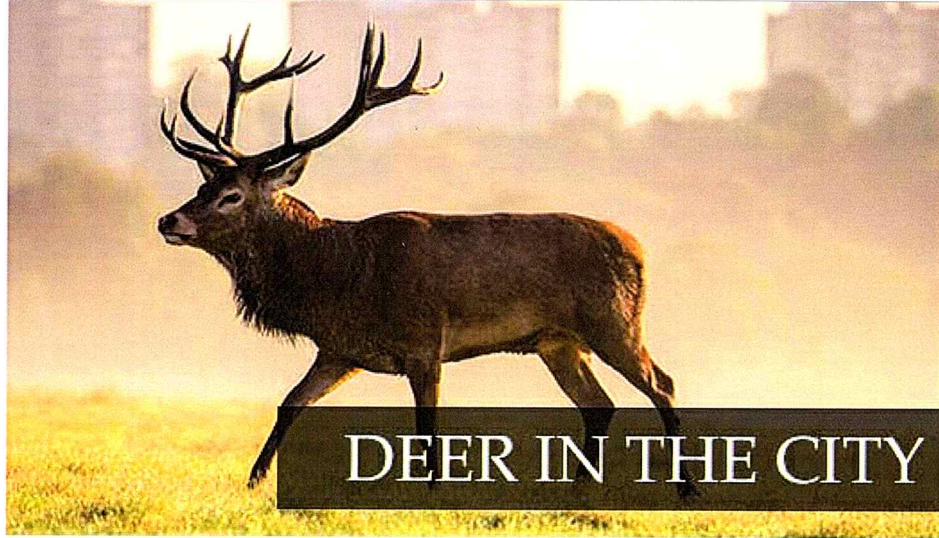
"I would like to extend my warmest congratulations to Neil for his achievement in being named the City & Guilds Apprentice Champion of the Year. Apprenticeships offer a fantastic way for many young people of all backgrounds to earn as they learn, while providing employers with the transferable skills needed to take their business from strength to strength."

Deer have been an essential part of Richmond Park since its creation by Charles I in 1637, echoing the style of a medieval deer park, much favoured by Monarchs in earlier times.

In the past, and today, the park landscape, and its historic buildings, reflect the deer's presence. White Lodge, now home to the Royal Ballet School, was built as a hunting Lodge in the 1720s. Pembroke Lodge, now a popular catering establishment and wedding venue, would originally have been a cottage for a mole catcher, whose job it was to eradicate moles (molehills made hunting on horseback such a hazardous pursuit).

The Hearsam Collection is a charity set up to link people with the rich history of Richmond Park, through the collection, conservation, display and interpretation of historic material relating to the park and (other Royal Parks).

With this aim in mind, and recognising the importance of the deer herds in Richmond Park, the Collection, supported by funding from the Heritage Lottery Fund, set up a project called 'Deer in the City'. It included a programme of free public activities along with an exhibition at Pembroke Lodge, which ran through part of July and August 2015. As well as the displays showing how the deer presence shaped the park over the centuries, there were heritage walks led by volunteers, and talks by local experts. In collaboration



The story of the wild deer in Richmond Park

Held at Pembroke Lodge, Richmond Park in summer 2015



with The Holly Lodge Centre "hands on" workshops took place for children and families to engage in arts and crafts activities related to deer.

More than 14,000 visitors were recorded as having taken part in the four-week programme, which was deemed to be a great success.



To view the video of the project, featuring Sir David Attenborough, visit: www.hearsumcollection.org.uk.

APPRENTICE MASTERCLASSES, 2015

Two more very successful Apprentice Masterclasses were held in 2015, organised by The Royal Parks Guild, in association with The Royal Parks. The first (the 4th masterclass in the series), was held at the LookOut Education Centre in Hyde Park on 28 July, and was themed around 'Wildlife in the City'. Thirty seven apprentices from 15 organisations attended. Thanks go to all who helped make this an excellent event, including Guild volunteers, staff from the Royal Parks and Royal Parks Foundation, RSPB, Land Use Consultants and London Wildlife Trust, who were also present on the day. We also thank Andrew Scattergood, Royal Parks CEO, for calling in to add his words of welcome and encouragement.

The 5th Masterclass, held on 28 October, was hosted by the Royal Horticultural Society at Wisley Gardens. All about plant naming (and titled 'It's all in a Name'), 48 apprentices took part from 12 organisations.

On the day, Andrew Scattergood was joined by Sarah Cathcart, RHS Head of Education, to present the Royal Parks apprentices with their Guild Awards (see

the separate sheet provided with this newsletter). Thanks must go to Guild volunteers and staff from The Royal Parks and the RHS for making this an entertaining and educational day.

A full report of the Masterclasses, including photos taken on both days, together with reports on previous Masterclasses, can be found on the Guild's website: www.trpg.org.uk.

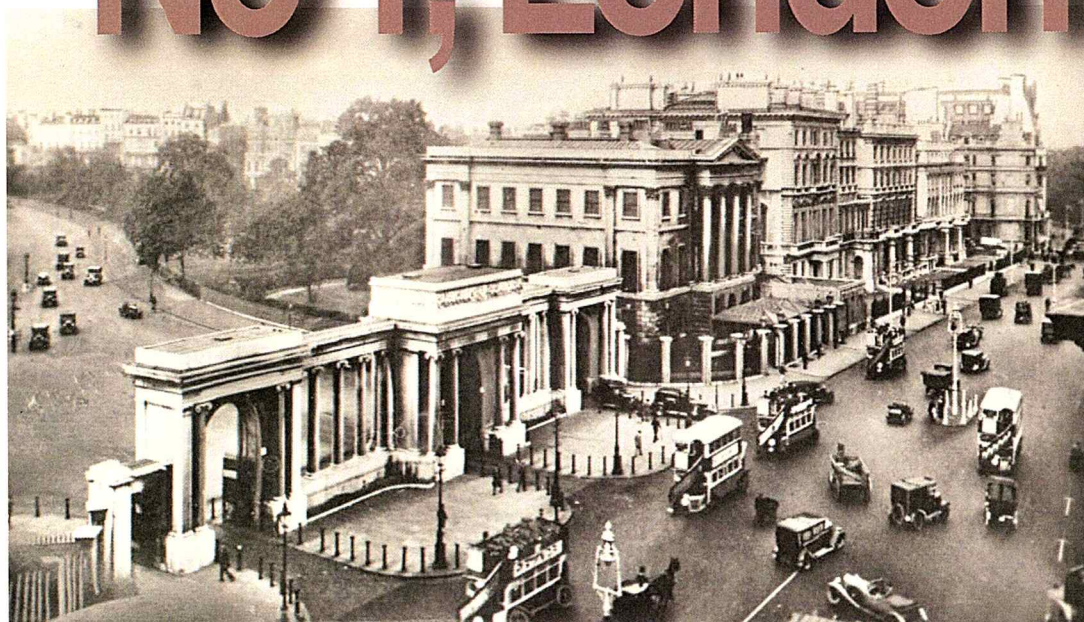


Attendees at the wildlife-themed Apprentice Masterclass in July

APSLEY HOUSE, HYDE PARK CORNER

No 1, London

Guild secretary **Barbara Fitt** has been researching this fascinating, historic building



LEFT: A pre-World War II photograph of Apsley House with neighbouring buildings in place (which were demolished when Park Lane was widened in the late 1950s).

BELOW: A print from 1750, showing Mr Allen's apple-stall (centre), old park lodges and the Pillar of Hercules Inn (right)

It is said that the site, at Hyde Park Corner, had been gifted by George II to Mr Allen, a discharged soldier who had fought under the King at Dettingen (1743). His wife kept an apple-stall here, which the thrifty couple turned by degrees into a small cottage. The couple's son, from dint of industry, became a respectable attorney.

After Allen died, the Chancellor gave the ground to a nobleman (the apple-stall had faded to nothing). It was conceived that the site had fallen to the Crown, so a stately mansion was soon raised, mainly red brick, from designs by Robert Adam.

Allen's son, the attorney, put in claims for the site. A small sum was offered, but refused. Finally the sum of £450 per annum ground rent was settled on.

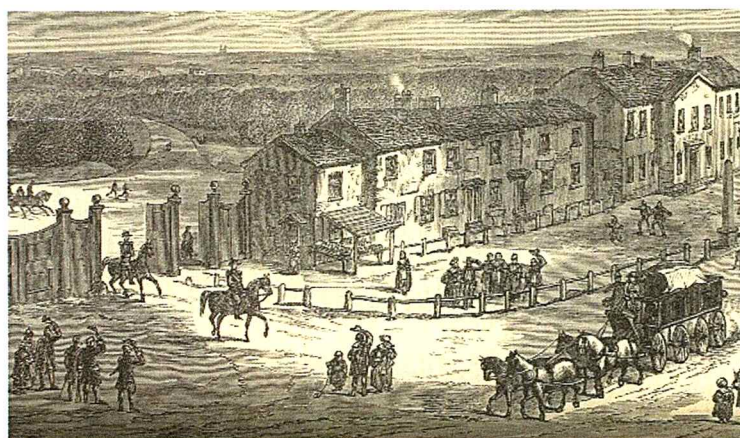
Apsley House was built between 1778-84 (the apple-stall, and old park lodges, had stood here before). Alongside the apple-stall and the park lodges stood the 'Pillars of Hercules', the inn at which Squire Western (in Henry Fielding's novel *Tom Jones*) stayed when pursuing his daughter. The inn stood there until 1797.

In 1784 Allen's son (or other kin) sold the ground to Henry, Lord Apsley, Lord Chancellor.

The Marquis of Wellesley occupied Apsley House in 1808, and his brother, the Duke of Wellington, from 1816; the house was presented to the Duke as a national gift, in 1820.

When Hyde Park Corner was improved in 1825 the old turnpike gate was removed, including ancient cottages which had stood near the spot, across the road, facing Apsley House.

The original Adam house was of red brick, but its exterior has been entirely transformed with the building of the Waterloo Gallery on the first floor, the addition of the Corinthian portico and facing the whole house with Bath stone in 1828-29 – transforming it to the house we know today. In 1947 the 7th Duke of Wellington offered to the Nation his London residence, with part of its contents and other objects connected with the Iron Duke. ■



ABOVE: An 1820 print of the Hyde Park Corner Turnpike Gate; the ancient cottages (mentioned in the text) are apparent (left), to the right appears a corner of the early version of Apsley House

Sources: (i) Old and New London Illustrated (1893); (ii) Romance & Realities of Mayfair & Piccadilly by P.R. Broemel (1927)

JOHN GIBSON (1815-1875)

Plant Collector, Park Designer,
Park Superintendent

by Mike Fitt

Last year marked the 200th anniversary of the birth of John Gibson. At the age of 17 he became an apprentice, working under Joseph Paxton at Chatsworth House. In the mid-1830s he spent time in India, collecting orchids and other exotics which he dispatched to Chatsworth. Upon his return he was appointed foreman of the exotic plant department.

He left Chatsworth in 1849 to begin an association with the Royal Parks, and this was to endure for the rest of his life. It included responsibility for Greenwich Park, time spent at Battersea Park (which he designed), overseeing the gardens at the Royal Hospital Chelsea, Kennington Park and the Royal Military Hospital – at the time all of these were managed by the Royal Parks.



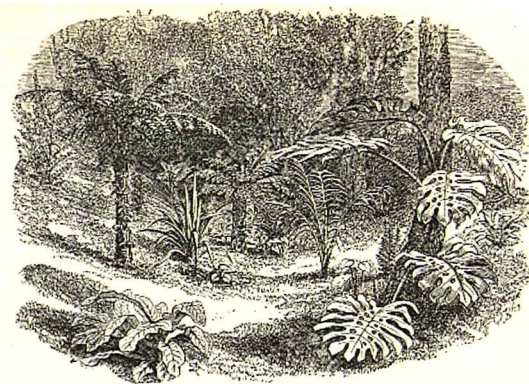
John Gibson

On the death of Mr. J. Mann in 1871, Gibson was chosen to fill the vacant position of Superintendent of St. James's Park, The Green Park, Hyde Park and Kensington Gardens. Gibson was one of the first public gardeners to break away from the formal symmetry of flower gardening, beginning to focus instead on the beauty and form of individual plants and naturalistic groupings, including the use of 'exotic plants'. His influence proved lasting, including the time he spent creating the sub-tropical garden in Battersea Park.

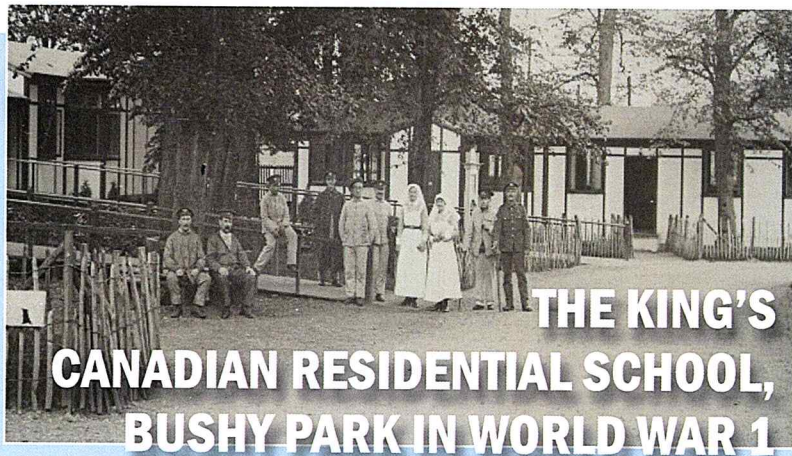
Much of the horticulture he established in the Royal Parks has become a tradition, and is carried on by the various park managers today.

John Gibson died in Argyle Lodge, South Kensington, in 1875.

ROYAL PARKS HISTORY



ABOVE: A sheltered tropical dell in Battersea Park during Gibson's time
BELOW: Contemporary planting of exotics at St James's Park, in the Gibson style



THE KING'S
CANADIAN RESIDENTIAL SCHOOL,
BUSHY PARK IN WORLD WAR 1

One hundred years ago "the Manor House and buildings appurtenant thereto, together with the lodge and grounds known as Upper Lodge", situated not far from Hampton Hill Gate in Bushy Park, were loaned by the Crown to the Canadian Red Cross Society.

On 27 December 1915, the buildings became the King's Red Cross Convalescent Hospital, and were opened by Queen Mary for the reception of 'patients'.

After the First World War the hospital was closed, and refurbishment started on the buildings to prepare for the handover to the London County Council as the King's Canadian Residential Open Air School for Poor Boys from the East End.

by Dave Ivison

Thanks to Ken Howe for permission to use his postcard showing the hospital at the time.

Mystery photos from the last Newsletter

The two pictures below, taken from the book *The Parks, Squares & Mews of London*, showed people in the Royal Parks from the 1960s. We asked Guild members if they knew who they were. Thank you to Brian and Pat Batten who emailed: "The top one shows Dudley Batten (Brian's Dad) outside Stable Yard Gate in the Mall entrance to Clarence House, Lancaster House and the Officers Mess and Chapel Royal. He lived in the Stable Yard Gate Lodge until his death in 1972.

The lower picture was in the Old Hyde Park Framing Ground, and shows Bob Whitley (a Grade 1 Gardener while Jack Brown was the Asst. Superintendent in the Nursery). I believe the cat's name was 'Mumsy'."



NEW TRPG MEMBERS

ExS = Ex-STAFF
 ExA = Ex-APPRENTICE
 PA = ASSOCIATED WITH TRP
 CurS = CURRENT STAFF AT TRP

NEW FULL MEMBERS

ALLEN, Louisa

City Gardens Manager at the City of London. PA

BARTRAM, John

Senior Wildlife Officer (Deer Keeper); joined the Royal Parks in 1986. CurS

CORBAY, Mrs Ruth

Admin Assistant, Richmond Park from 1991-94. ExS

RIEHL, Julie

Allotment Garden Volunteer Co-ordinator, Regent's Park. PA

ROWE, Mark

Assistant Park Manager, Regent's Park. CurS

RYAN, Julia

Julia Ryan Events; former staff member at Capel Manor College. PA

SCALZO, Robert

Trustee, Holly Lodge Centre (Events), Richmond Park. PA

WINDSOR, Mike

Director, ISS Facility Services Landscaping. PA

STAFF CHANGES IN THE ROYAL PARKS:

- **Dave Ellis**, now Horticultural Landscape Development Officer, TRP;
- **Rob Dowling**, now Park Manager, Hyde Park;
- **Louise Simmonds**, now Asst. Park Manager, Hyde Park;
- **Steve Edwards**, now Head of Special Projects.

We would like to send our best wishes to **Lady Ann Riches** who suffered a stroke before Christmas.

CONTACTING THE GUILD:

WEBSITE: www.trpg.org.uk

POST: 14 Nelson Place, Ryde, Isle of Wight, PO33 2ET

TELEPHONE: 07973 402810

EMAIL: info@theroyalparksguild.org

NEWSLETTER EDITOR: Graham Clarke
 01202 575967 or graham.hhps@gmail.com

Printed by Island Digital Printers Ltd, Ryde
 Tel: 01983 566249

PEOPLE

Belated congratulations to Guild member **Paul Schooling**, the Royal Parks gardener at No 10 Downing Street. He is seen here, being presented with a BEM by David Cameron (in last year's birthday honours) for 31 years public service.



Simon Richards, Park Manager at Richmond Park, has completed 30 years in the Royal Parks, having started at Hyde Park in 1985 as Assistant Park Superintendent.

Mary Wozzley has now moved into a nursing home in Norfolk, and is very happy. Mary was chair of the Central Royal Parks Wildlife Group in the 1980s. She was 98 in January 2016.



FOUNDING PATRON
 Alan Titchmarsh MBE

HONORARY MEMBER
 Mrs Jean Cooke

IN OUR THOUGHTS

MILDRED ELKINS 1924-2015

Mildred spent part of her teenage years, during WW2, living in Cannon Gate Lodge (Guns Lodge), Bushy Park (article in our newsletter No. 15) with her mum and stepfather Walter Weldon. Mildred went on to marry Bert Elkins, son of a gatekeeper in Bushy Park. Mildred remembered watching the Coronation Procession of Queen Elizabeth II from the roof of the gate lodge at Marble Arch. Her happiness in 2012 completed the story when Mike Fitt arranged for her to be in the line up to meet the Queen, at the Wild London Jubilee event, in Richmond Park on 15 May 2012. Mildred said she could not have wished for a better finale to her life.



Mildred (second left), meeting Her Majesty The Queen

ED 'STEWPTOT' STEWART 1941-2016

There have been many press tributes paid to Ed who, since the 1960s, had been a popular radio presenter and disc jockey. But what many of those paying tribute did not know was that for many years Ed had been a member of The Royal Parks Guild, and was the President of the charity PHAB, attending many of their yearly PHAB 'Heartbeat Hike' events in Hyde Park. Born in 1941, in Exmouth, Devon, his real name was Edward Stewart Mainwaring. He will be greatly missed by all those who had the opportunity to meet him, work with him, or remember his time at the BBC on, amongst other programmes, *Crackerjack*, *Junior Choice* and *Top of the Pops*.



Ed was a great supporter of charities. (Right) In 2008 he attended the Guild's AGM.



STOP PRESS

Just as this edition of the Newsletter goes to press, we are sad to report the deaths of **Paul Kitson** (Richmond Park, Kensington Gardens and Regent's Park) and **Jim Smith** (Regent's Park). Many Guild members will remember them both fondly. Full tributes will appear in the next Newsletter.